

Corinex Powerline Router



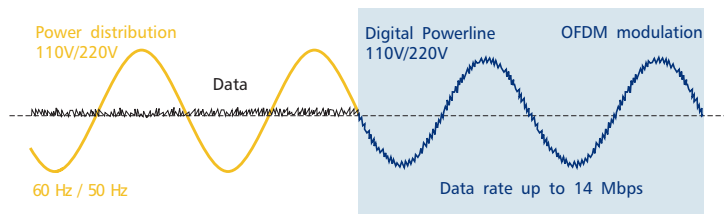
The Corinex Powerline Router provides a convenient Internet access and distribution capability for broadband service providers and users alike, using any incoming high speed signal, whether by A/DSL, cable, satellite or fiber optics as access - and the existing electrical wires as distribution media. This product enables multiple users in small to medium size offices and homes to share one broadband account and experience a high speed networking capability for data, voice, audio and video, without pulling any new wires.



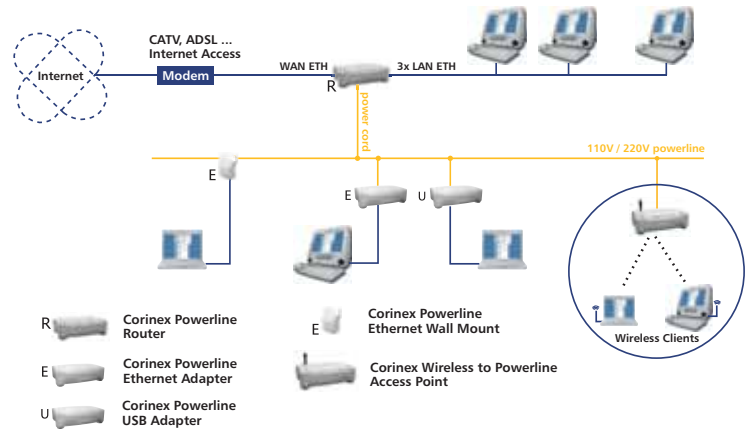
Corinex Powerline products have been optimized for high-reliability networking applications. Internet and network access is available through every power outlet in the home or office. Corinex's HomePlug certified Powerline networking technology supports up to 14 Mbps data rates. Corinex Powerline adapters are certified by and compliant with the HomePlug Powerline Alliance Industry Specification 1.0.1. This ensures interoperability with other HomePlug devices. Powerline technology provides a high quality of service for the adapters to ensure secure, reliable channels for transferring files, streaming audio, video, or voice data and even online gaming.

Powerline Communications

Corinex Powerline products (USB, Ethernet, Wall Mount, Router and Wireless) are designed to use existing AC electrical wiring within the home as a networking physical medium. Robust performance in the electrical noisy power line channel is enabled by the use of the Orthogonal Frequency Division Multiplexing (OFDM) technology. This multi-carrier modulation scheme allows devices to dynamically "surf the channel" - instantly shifting data from one carrier to another as noise and attenuation conditions change. The OFDM technology finds the low noise, low attenuation portions of the spectrum available to it and continues data transmission.



What Can a Corinex Router Provide?



The router can act as the "bridge" between the access side of the network and its specific wire requirements and the distribution side of the network, which uses the existing electrical wires to move the signals to every electrical outlet and makes those signals available to wired or portable devices. The Corinex Powerline Router supports the entirely new Corinex Powerline and CableLAN products family, which consists of:

- Corinex Powerline Ethernet Adapter
- Corinex Powerline USB Adapter
- Corinex Powerline Ethernet Wall Mount
- Corinex CableLAN Adapter
- Corinex Wireless to Powerline Access Point
- Corinex Diagnostics Kit
- Corinex Open Powerline Management

The router has three LAN, one WAN 10/100M Ethernet and one powerline LAN ports.

Product Features

• Broadband Internet Sharing for Multiple Users

The embedded Network Address Translation (NAT) feature enables the usage of a private set of IP addresses, which the router translates into a single public IP address. The router can also act as a DHCP server by automatically allocating an IP address to each piece of equipment, connected by a communications port, like Ethernet, USB, PCI or 802.11b to the network.

• High Usability and Manageability

The Corinex Powerline Router contains an HTTP server with a web configurable SNMP powerline agent. This enables you to connect to it, and configure it, using your web browser. Every Corinex Powerline, CableLAN and Wireless product, no matter where it is located in the network, can be managed by the Corinex Open Powerline Management software or by using a web browser. Corinex offers a one-stop-shop experience and offers this for networking solutions in homes, apartments, condominiums, small to medium size offices, schools, hospitals, hotels, conference centers or shopping malls. End user equipment which uses Corinex adapters to the network can run on Windows 98/ME/2000/NT/XP, Linux and MAC OS X operating systems and use the full range of the Routers networking features.

• Rich Protocol Support

The Corinex Powerline Router also fully complies with the IEEE 802.3 and 802.3u 10/100M standard and offers static and dynamic IP routing mode operation, NAT, DHCP and IP filtering functionality. The router supports a wide range of communications protocols and works seamlessly with all major access technologies, including A/DSL and Cable modems with PPPoE (PPP over Ethernet) and/or Microsoft Peer-to-Peer Tunneling Protocol (PPTP), as well as "Direct Connection" type service. Corinex Powerline Router advanced firewalling features protect home/SOHO networks from unwanted access.

- Physical layer data rate of up to 14 Mbps over the power line with distances of up to 200m, Multiprotocol communication (TCP/IP, NetBEUI, IPX/SPX)
- 56 Bit DES link encryption with key management for secured communication
- Orthogonal Frequency Division Multiplexing (OFDM) with sophisticated signal processing techniques for high data reliability in noisy media conditions
- Intelligent channel adaptation maximizes throughput under harsh channel conditions
- Integrated Quality of Service (QoS) features such as four-level prioritized random access, contention-free access, and segment bursting
- Implements a scheme with prioritization and repeat request for reliable delivery of Ethernet packets via packet encapsulation
- Enables users to connect individual PCs into a local area network through a 110 V or 220 V electric powerline network
- Bandwidth for multimedia payloads including video, voice, data and networked gaming
- Easy to use and install, if you do not want to change the security settings, no drivers are required

- Provides a secure and inexpensive broadband access to the Internet
- Can be managed by Corinex Open Powerline Management software
- FCC and CE certified

Product Specifications

Product Code: CXP-RTR

Please refer to the Price List for the exact product code specification for your region.

Product Content

- Device
- Installation CD with
 - Setup Tool for most of operating systems (Win9x/NT/2000/XP, Linux, Mac OS X)
 - Detailed User Guide
- AC Power Adapter, Ethernet Cable
- Printed Quick Start Guide

Technical Specifications

Standards Compliance	HomePlug v 1.0.1 certified
	Windows 95/98/Me/2000/XP, Linux or Mac OS X compatible for the Setup Tool
	IEEE 802.3
Speed	16 Mbps (Ethernet), 14 Mbps (Powerline)
Cabling type	1. Standard straight - through RJ 45 cable for both LAN / WAN 2. Power cord to external power supply with four different plugs EU, US, AUS and UK (110 V or 230 V)
LED Status Lights:	Per unit: Test WAN: Link/Activity Ethernet LAN: Link/Activity, 10/100M Powerline LAN: Powerline Link, Powerline Activity
Unit Dimensions	148 mm L x 106 mm W x 47 mm H
Weight	0.274 kg
WAN Interface	One 10/100 Mbps Ethernet RJ 45 at MDI X
LAN Interface	1. Three 10/100 Mbps Ethernet RJ 45 ports at MDI 2. One DC power connector for both powerline networking and power supply
Power Input	110/120 or 220/240 V External Power Supply (6.5 V DC, 1 A)
Power Consumption	5 W
Safety & EMI	UL/FCC and / or CB/CE and / or international standards approved
Operating Temperature	0° to 55°C (32°F to 131°F)
Operating Humidity	10% to 85% non-condensing

Standards Support	IEEE802.3, IEEE802.3u, HomePlug v. 1.0.1			
Protocol Support	Protocol	RFC #	RFC Status	STD #
	TCP	793	Standard	5
	IP	791	Standard	7
	DNS (Relay)	1034, 1035	Standard	13
	ARP	826	Standard	37
	UDP	768	Standard	6
	ICMP	792	Standard	5
	PPP	1661	Standard	51
	RIP II	2453	Standard	56
	RIP I	1058	Historic	
	TFTP	1350	Standard	33
	CHAP/PAP	1994	Draft Standard	
	NTP	1305	Draft Standard	
	DHCP	2131	Draft Standard	
	NAT	2766	Proposed Standard	
	PPPoE	2516	Informational	
	PPTP	2637	Informational	
	HTTP	2616	Draft Standard	
	IP Routing (Static Route)			
Diagnostics LEDs	Per Unit: - TEST Ethernet WAN: - LINK Ethernet LAN: - LINK/ACT (x3) - 10/100 M (x3) Powerline LAN: - LINK - ACT			
Security/Firewall	- NAT Firewall - DMZ host (up to 8) - Security log			
NAT	Multimedia Application Support (Support for following list) - Netmeeting / H.323 - Games – such as Quake, Half-Life, Starcraft, Unreal Tournament, Diablo II, ... - mIRC, ICQ, Instant Messenger, RealPlayer, VDOLive, QuickTime, MS Messenger - Virtual Server (up to 32) - Customer Port Forwarding and Public/Private Port Translation - Port Range Forwarding - Server Wan Loopback (Access LAN Server by Wan IP) - Disable/Enable Wan Ping			

PPPoE	<ul style="list-style-type: none"> - Dial on demand. Supports dial/hang-up manually - Idle Timer Setting - Configurable MTU (Maximum Transmission Unit)
PPTP	Microsoft PPTP Client
DHCP	<ul style="list-style-type: none"> - WAN: DHCP Client - LAN: DHCP Server. Assign IP by range (1~254) - Adjustable DHCP IP range - IP Address Reservation - Display DHCP Table (Computer Name, IP Address, MAC Address) - Manual Refresh
VPN Supports	Client and server pass-through <ul style="list-style-type: none"> - Microsoft PPTP - IPSec - L2TP
Advanced Features	<ul style="list-style-type: none"> - LAN IP Address Filter - WAN IP Port Filter - Filter by both LAN IP and Port Number - Content Filter: URL Blocking - Access Filtering (Block by Service, IP range, MAC, time of day according to service, up to 32 entries) - MAC Address Clone - DNS Proxy - Save/Restore Configuration - Logging
Management of Device	<ul style="list-style-type: none"> - Web-based configuration via popular browser (MS IE, Netscape...) - Supports WAN Administration - Firmware download and upgrade via Web server - Load Factory Default setting via Web server or hardware button - System log via Web - NEK Password Setting - Discovery of other Powerlines - Powerline Statistics



Corinex Communications Corp.
 World Trade Center
 404-999 Canada Place
 Vancouver, B.C.
 Canada V6C 3E2
 Tel: +1 - 604 - 692 0520
 Fax: +1 - 604 - 694 0061
 E-mail: global@corinex.com
<http://www.corinex.com>

Corinex Global, a.s.
 Ruzova dolina 19
 820 05 Bratislava
 Slovak Republic
 Tel.: +421 - 2 - 5021 4811
 Fax: +421 - 2 - 5556 7309
 E-mail: global@corinex.com

Corinex is a registered trademark of Corinex Communications Corp.
 HomePlug® is a registered trademark of HomePlug® Powerline Alliance.

2003-10-20 ver.2

The content of this document is furnished for informational use only, it is subject to change without notice, and it does not represent a commitment on the part of Corinex Communications Corp.